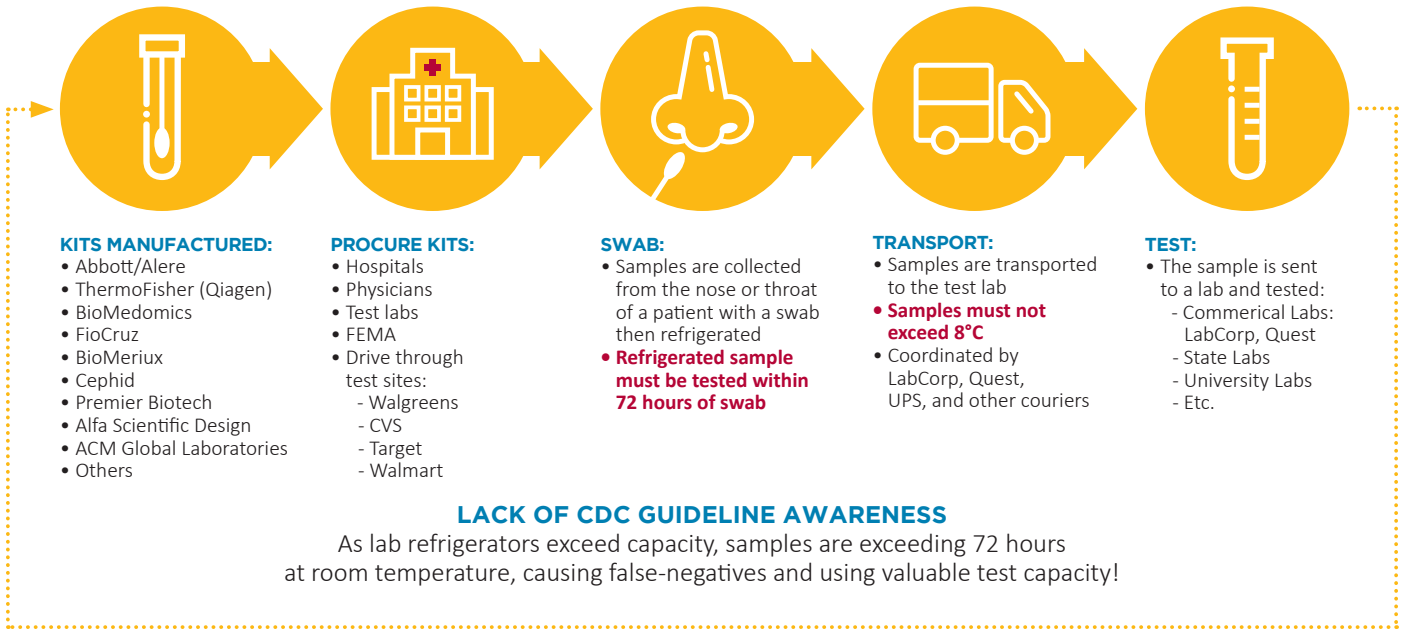


COVID-19 TempControl

WHAT IS THE PROCESS FOR TESTING AND WHO ARE THE PLAYERS?



The U.S. Center for Disease Control (CDC) issued guidelines for the storage and transport of COVID-19 specimens.

GENERAL GUIDELINES:

If refrigerated, store specimens less than 8°C and ship overnight on ice pack.

Following these guidelines will reduce specimen rejection rate and reduce opportunities for “false negative results.”

CAUSES FOR REJECTION:

- Refrigerated samples greater than 72 hours old
- Room temperature specimen submitted
- Improperly labeled
- Grossly contaminated; broken or leaking transport device

We are partnering with test kit providers (i.e. Thermo Fisher and BioMérieux), medical supply / cold chain packaging distributors, health departments, hospitals, and affiliated laboratories to prevent unnecessary false negative COVID-19 test results through simple temperature monitoring.

SPOTSEE HOTLINE:

Domestic: (800) 527-9497

International: +1 (214)-736-4578

SPOTSEE'S PRODUCT THAT INDICATES IF SPECIMENS HAVE EXCEEDED CONTROL TEMPERATURES:

